

American Museum Novitates

PUBLISHED BY THE AMERICAN MUSEUM OF NATURAL HISTORY
CENTRAL PARK WEST AT 79TH STREET, NEW YORK 24, N.Y.

NUMBER 2190

SEPTEMBER 10, 1964

The Meteorite and Tektite Collection of the American Museum of Natural History

BY BRIAN MASON¹

INTRODUCTION

The first meteorite received by the American Museum of Natural History was a 46-gram piece of the Searsmont chondrite, presented by G. M. Brainerd of Rockland, Maine, in 1872. For some years the collection grew very slowly. Hovey (1896) published the first catalogue, in which he enumerated 55 pieces representing 26 different meteorites. However, the status of the collection was radically changed in 1900 with the acquisition of the Bement collection of minerals, through the generosity of J. Pierpont Morgan. Besides some 12,000 mineral specimens, the Bement collection contained 580 meteorites, representing nearly 500 different falls and finds. This acquisition established the meteorite collection of this museum as one of the great collections of the world, a situation that has been maintained by more recent additions.

Some of the more notable additions may be briefly noted. In 1904 three Cape York irons, brought from Greenland in 1897 by R. E. Peary, were deposited in the museum. These are known as "Ahnighito" or "The Tent," "The Woman," and "The Dog" (fig. 1). "Ahnighito," the largest of the three, is approximately 11 feet long, 7 feet high, and 6 feet thick. Various estimates of its weight, ranging from 30 to 80 tons, have been published. Thanks to the Toledo Scale Company it was mounted

¹ Chairman, Department of Mineralogy, the American Museum of Natural History.

on a scale platform in 1958, and the weight proved to be 68,080 pounds, or 30,875 kilograms. At the time it was received it was the largest known meteorite and is still the largest in any museum. "The Woman" weighs 3 tons; "The Dog," 960 pounds.

The Cape York irons were complemented in 1906 by the presentation of the Willamette meteorite to the museum by Mrs. William E. Dodge. This iron (fig. 2), which weighs 14,007 kilograms, is the largest ever

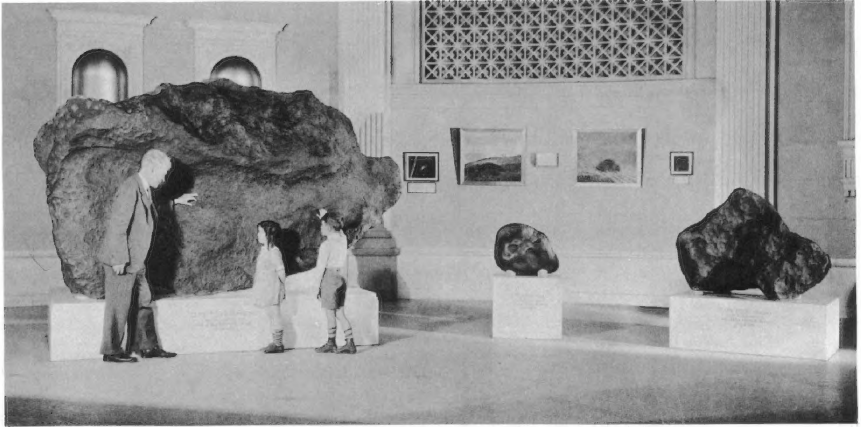


FIG. 1. The Cape York meteorites.

found in the United States of America. It was found in 1902 near Oregon City in Clackamas County, Oregon. Apart from its size, the striking feature of the Willamette meteorite is its deeply pitted (rear) surface. The opposite side shows a well-developed "nose," a conical surface with shallow pits and grooves, evidently the result of ablation during the passage of the meteorite through the atmosphere.

Other meteorites in the collection notable for their size include the Selma chondrite, the weight of which, when recovered in 1906, was 310 pounds, at that time making it one of the largest stones known; the 682-pound Guffey iron from Colorado; a 220-pound specimen of the Brenham pallasite; a 665-pound specimen of the Gibeon irons from Southwest Africa; a 1087-pound Canyon Diablo iron; and the single 310-pound Ysleta iron from Ysleta, Texas.

It is interesting to note that during the history of this museum no genuine meteorite has been sent in by a member of the general public, although many specimens believed to be meteorites have been submitted for examination. The late Dr. Barnum Brown, for many years a

curator in the Department of Vertebrate Paleontology, found four small chondritic meteorites at Valley Wells, California, in 1930. A recent expedition to Australia has been successful in collecting large amounts of the Wolf Creek and Dalgety Downs meteorites, and numerous tektites.

The last catalogue of the meteorite collection was published in 1937 by Chester A. Reeds. At that time the collection contained about 3500 specimens, representing 546 different meteorites. Since that time the

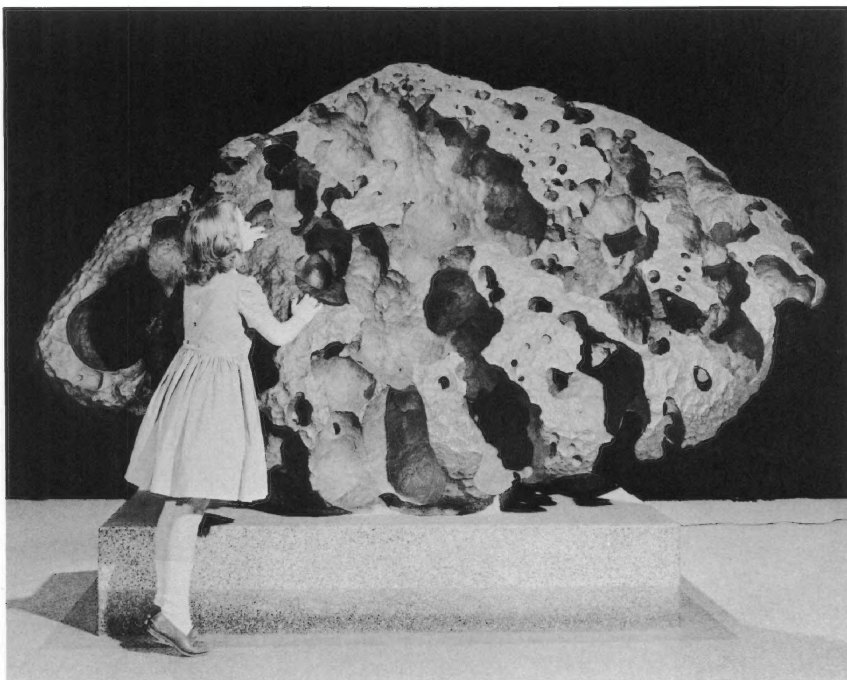


FIG. 2. The Willamette meteorite.

collection has grown steadily, and the present catalogue enumerates some 4000 specimens, representing 850 different meteorites.

In the preparation of this catalogue I have been greatly assisted by Miss Lenore Weber. A considerable amount of mineralogical and chemical investigation has been carried out in order to establish the correct classification of some of these meteorites. The expenses of these investigations have been met to a considerable extent by grants (NSF-G14547 and NSF-GP1218) from the National Science Foundation.

ALPHABETICAL LIST OF METEORITES

In the following list the symbols for the classes are as follows:

Ad, diopside-olivine achondrite
 Ae, enstatite achondrite
 Ah, hypersthene achondrite
 Ao, olivine achondrite
 Ap, pyroxene-plagioclase achondrite
 Au, olivine-pigeonite achondrite
 C, chondrite
 Cb, olivine-bronzite chondrite
 Cc, carbonaceous chondrite
 Ce, enstatite chondrite
 Ch, olivine-hypersthene chondrite
 Cp, olivine-pigeonite chondrite
 D, nickel-rich ataxite
 H, hexahedrite
 L, lodranite
 M, mesosiderite
 O, octahedrite
 Of, fine octahedrite
 Og, coarse octahedrite
 Om, medium octahedrite
 P, pallasite
 S, siderophyre

NAME ¹ AND LOCALITY	DATE OF FALL	CLASS	CATALOGUE	WEIGHT IN
	OR FIND		No.	GRAMS
*Aarhus (Denmark)	1951	Cb	3986	2.9
*Abee (Canada)	1952	Ce	3907	504
			3987	1,010
Abernathy (Texas)	1941	Ch	3988	2.2
Accalana (Australia)	1917	Ch	3989	1.4
Achilles (Kansas)	1924	Cb	3837	139
*Achiras (Argentina)	1902	Ch	3933	49
Acme (New Mexico)	1947	Cb	3990	10
Adams County (Colorado)	1928	Cb	3991	1.2
Adargas (Mexico)	1780	Om	128	33
			716	41
Adelie Land (Antarctica)	1912	Ch	3992	2.5
*Adhi Kot (Pakistan)	1919	Ce	3993	98
Admire (Kansas)	1881	P	322	527
			3754	5,600
			4176	240
Adrian (Texas)	1936	Cb	3994	0.8

¹ An asterisk indicates an observed fall.

NAME AND LOCALITY	DATE OF FALL		CATALOGUE	WEIGHT IN
	OR FIND	CLASS		
*Agen (France)	1814	Cb	394	77
Agricultural College (U.S.S.R.)	?	H	202	126
*Aguada (Argentina)	1930	Ch	3934	86
Ahumada (Mexico)	1909	P	323	3,405
Ainsworth (Nebraska)	1907	Og	850	3,508
			853	60
*Akaba (Jordan)	1949	Ch	3995	0.7
Akpohon (Canada)	1913	Og	289	1,473
Akron No. 2 (Colorado)	1954	Cb	3996	1.3
Akron No. 3 (Colorado)	1961	Ch	4160	42
*Akwanga (Nigeria)	1959	Cb	3997	0.9
*Alais (France)	1806	Cc	395	0.3
Alamogordo (New Mexico)	1938	Cb	3831	365
*Aldsworth (England)	1835	Ch	397	1.4
*Aleppo (Syria)	1873?	Ch	398	147
*Alessandria (Italy)	1860	Cb	2224	8.8
Alexander County (North Carolina)	1875	Og	77	61
*Alfianello (Italy)	1883	Ch	399	1,363
			638	5.6
*Allegan (Michigan)	1899	Cb	371	97
*Al Rais (Saudi Arabia)	1957	Cc	4168	3.2
*Ambapur Nagla (India)	1895	Cb	401	87
*Andover (Maine)	1898	Ch	3998	0.8
*Andura (India)	1939	Cb	3999	1.0
Angelica (Wisconsin)	1916	Og	3913	110
*Angers (France)	1822	Ch	402	1.1
			1049	19
Anoka (Minnesota)	1963	Of	4161	39
Apoala (Mexico)	1889	Of	129	80
*Appley Bridge (England)	1914	Ch	3922	215
*Apt (France)	1803	Ch	403	1.3
Arcadia (Nebraska)	1937	Ch	3939	68
*Archie (Missouri)	1932	Cb	4000	46
Arispe (Mexico)	1896	Og	236	6,125
Arlington (Minnesota)	1894	Om	61	996
Arriba (Colorado)	1936	Ch	3820	160
Artracoona (Australia)	1914	Ch	4001	5.7
*Asco (Corsica)	1805	Ch	606	1.9
Ashfork (Arizona)	1901	Og	2619	1,470
Assam (India)	1846	Ch	599	1.3
*Assisi (Italy)	1886	Cb	405	4.5
*Atemajac (Mexico)	1896	Ch	4002	0.5
Atlanta (Louisiana)	1938	Ce	3923	142
Auburn (Alabama)	1867	H	3	99
Augustinovka (U.S.S.R.)	1890	Of	193	252
			2537	51

NAME AND LOCALITY	DATE OF FALL		CATALOGUE No.	WEIGHT IN GRAMS
	OR FIND	CLASS		
*Aumale (Algeria)	1865	Ch	407	60
*Aumières (France)	1842	Ch	652	45
Aurora (New Mexico)	1938	Cb	4003	2.5
*Ausson (France)	1858	Ch	408	271
			1051	166
Australia (Australia)	1880	P	439	21
Babb's Mill (Tennessee)	1842	D	98	58
*Bachmut (U.S.S.R.)	1814	Ch	409	25
Bacubirito (Mexico)	1863	Of	139	26
Balfour Downs (Australia)	1962	Om	4187	754
Ballinger (Texas)	1927	H	2613	74
Ballinoo (Australia)	1892	Of	157	3,320
*Bandong (Java)	1871	Ch	410	28
*Barbotan (France)	1790	Cb	3904	89
Barranca Blanca (Chile)	1855	O	147	73
Barratta (Australia)	1845	Ch	412	1.3
			614	2,107
*Bath (South Dakota)	1892	Cb	387	2,816
*Bath Furnace (Kentucky)	1902	Ch	616	50
Bear Creek (Colorado)	1866	Of	32	116
*Beardsley (Kansas)	1929	Cb	3888	53
			4177	107
*Beaver Creek (Canada)	1893	Cb	413	2,772
			2204	10
*Beddgelert (Wales)	1949	Cb	4004	1.1
Beenham (New Mexico)	1937	Ch	3807	74
Bella Roca (Mexico)	1888	Of	135	2,000
			266	190
Belle Plaine (Kansas)	1955	Ch	4169	23
*Bells (Texas)	1961	Cc	4005	2.8
			4006	2.2
*Benares (India)	1798	Ch	415	7.8
Bendego (Brazil)	1784	Og	145	726
*Benton (Canada)	1949	Ch	3806	127
*Berlanguillas (Spain)	1811	Ch	416	2.2
*Bethlehem (New York)	1859	Cb	1031	2.7
Bethune (Colorado)	1941	Ce	4201	16
*Bialystok (Poland)	1827	Ap	4007	1.1
*Bielokrynitschie (U.S.S.R.)	1887	Cb	417	30
Billings (Missouri)	1903	Og	240	2,203
*Binda (Australia)	1912	Ap	4008	31
Bingera (Australia)	1880	H	2609	268
Bischtübe (U.S.S.R.)	1888	Og	194	402
*Bishopville (South Carolina)	1843	Ae	386	29
*Bishunpur (India)	1895	Cb	418	4.9
			532	1.0
Bitburg (Germany)	1805	P	321	80

NAME AND LOCALITY	DATE OF FALL		CATALOGUE	WEIGHT IN
	OR FIND	CLASS		
*Bjurböle (Finland)	1899	Ch	598	224
			3964	574
Black Mountain (North Carolina)	1839	Og	78	2.5
			687	52
*Blansko (Czechoslovakia)	1833	Cb	419	2.5
Bliethfield (Canada)	1910	Ce	646	176
Bluff (Texas)	1878	Ch	392	352
			1039	12,318
			1040	15
			1041	3,176
			1044	81
			1045	18
Boelus (Nebraska)	1941	Ch	4009	1.4
Bohumilitz (Czechoslovakia)	1829	Og	180	249
Bondoc (Philippine Islands)	1957	M	3980	238
			3981	119
			3982	96
			3983	82
			3984	58
			3985	43
Bonita Springs (Florida)	1938	Cb	3881	374
*Borgo San Donnino (Italy)	1808	Ch	420	0.9
*Bori (India)	1894	Ch	421	340
*Boriskino (U.S.S.R.)	1930	Cc	4010	2.4
*Borkut (Czechoslovakia)	1852	Ch	414	35
Bowesmont (North Dakota)	1962	Ch	4162	97
Boxhole (Australia)	1937	Om	3765	7,617
			3968	458
			3969	655
Brahin (U.S.S.R.)	1810	P	318	76
*Braunau (Czechoslovakia)	1847	H	181	222
*Breitscheid (Germany)	1956	Cb	3912	25
*Bremervörde (Germany)	1855	Ch	422	204
Brenham (Kansas)	1882	P	56	723
			219	584
			782	830
			784	2,371
			879	1,326
			880	1,505
			881	1,219
			883	34,020
			884	33,600
			885	411
			989	119

NAME AND LOCALITY	DATE OF FALL OR FIND	CLASS	CATALOGUE	WEIGHT IN
			No.	GRAMS
			2460	98,112
			2698-2704	1,025
			3813	5,320
Bridgewater (North Carolina)	1890	Of	79	156
Briscoe (Texas)	1940	Ch	3841	57
Bristol (Tennessee)	1937	Of	3745	193
*Bruderheim (Canada)	1960	Ch	3886	401
*Bur-Gheluai (Somalia)	1919	Cb	2258	1,038
			2259	30
Burkett (Texas)	1913	Og	284	3,071
			859	2,773
			860	818
Burlington (New York)	1819	Om	73	69
*Buschhof (U.S.S.R.)	1863	Ch	423	178
*Bustee (India)	1852	Ae	424	1.4
Butler (Missouri)	1874	Of	63	335
*Butsura (India)	1861	Cb	425	53
*Cabeza de Mayo (Spain)	1870	Ch	426	6.9
Cachari (Argentina)	1916	Ap	4011	0.6
Cachiyuyal (Chile)	1874	Om	3819	12
Cadell (Australia)	1910	Ch	4012	2.0
Calliham (Texas)	1958	Ch	4163	83
Cambria (New York)	1818	Of	74	210
*Canellas (Spain)	1861	Cb	4013	0.5
*Cangas de Onis (Spain)	1866	Cb	427	3.3
Canton (Georgia)	1894	Om	275	36
Canyon City (California)	1875	Om	25	3.3
			292	800
Canyon Diablo (Arizona)	1891	Og	9	8,406
			10	1,346
			12	142
			14	832
			15	205
			16	374
			17	70
			18	15
			19	65,772
			22	1,624
			206	652
			207	355
			825	246
			831	73
			841	156
			842	43
			2235	493,100
			2602	30
			2639	333

NAME AND LOCALITY	DATE OF FALL		CATALOGUE	WEIGHT IN
	OR FIND	CLASS	No.	GRAMS
			3811	10,985
			3812	6,910
			4164	995
*Cape Girardeau (Missouri)	1846	Cb	374	36
Cape of Good Hope (South Africa)	1793	D	171	119
Cape York (Greenland)	1894	Om	867	31 tons
			868	3 tons
			869	407,000
			2631	45
			2632	15
			2633	69
			2634	73
			2689	539
			2690	177
			2692	10
			2693	186
			2694	76
Capilla del Monte (Argentina)	1963?	Cb	4014	9.0
Carbo (Mexico)	1923	Om	3892	642
Carlton (Texas)	1887	Of	112	655
			116	4,257
			2559	9.5
			3851	45
Caroline (Australia)	1941	Cb	4015	0.9
Carraweena (Australia)	1914	Ch	3902	483
Carthage (Tennessee)	1840	Om	102	35
Cartoonkana (Australia)	1914	Ch	4016	1.5
Casas Grandes (Mexico)	1867	Om	211	814
			260	4.7
			317	1.7
Casey County (Kentucky)	1877	Og	36	22
Cashion (Oklahoma)	1936	Cb	3842	68
			4017	11
*Castalia (North Carolina)	1874	Cb	382	123
*Castine (Maine)	1848	Ch	589	0.9
Cavour (South Dakota)	1943	Cb	4018	3
Cedar (Texas)	1900	Cb	4019	1
Cedartown (Georgia)	1898	H	3757	271
Central Missouri (Missouri)	1855	Og	67	1,055
*Cereseto (Italy)	1840	Cb	429	0.8
*Chainpur (India)	1907	C	4020	73
*Chandakapur (India)	1836	Ch	430	18
*Chantonnay (France)	1812	Ch	1055	161
Charcas (Mexico)	1804	Om	130	148
*Charlotte (Tennessee)	1835	Of	99	59

NAME AND LOCALITY	DATE OF FALL		CATALOGUE	WEIGHT IN
	OR FIND	CLASS	No.	GRAMS
*Charsonville (France)	1810	Cb	1056	310
*Charwallas (India)	1834	Cb	433	0.1
*Chassigny (France)	1815	Ao	434	2.1
			4021	1.5
*Chateau-Renard (France)	1841	Ch	435	56
*Chaves (Portugal)	1926	Ap	4022	0.8
*Cherokee Springs (South Carolina)	1933	Ch	4023	0.6
Chesterville (South Carolina)	1849	H	694	29
Chico (New Mexico)	1954	Ch	4024	1.7
Chilkoot (Alaska)	1881	Om	8	26
Chinautla (Guatemala)	1902	Om	2230	95
Chulafinnee (Alabama)	1873	Om	5	83
Chupaderos (Mexico)	1852	Of	132	119
Cincinnati (Ohio)	1870	H	89	84
Cleveland (Tennessee)	1860	Om	100	167
			109	317
Clovis (New Mexico)	1961	Cb	4025	13
Coahuila (Mexico)	1837	H	115	291
			131	53
			216	1,314
			717	247
			718	550
			719	870
			720	2,142
			721	4,070
			780	1.2
			781	5.7
Cobija (Chile)	1892	Cb	592	274
Cocklebidy (Australia)	1961	Cb	4174	141
Cocunda (Australia)	1945	Ch	4026	1.0
Colby (Kansas)	1940	Cb	4027	1.4
*Colby (Wisconsin)	1917	Ch	666	13
			999	810
*Cold Bokkeveld (South Africa)	1838	Cc	436	4.6
			4157	5.9
Coldwater (Kansas)	1923	O	3825	2,265
Coldwater (Kansas)	1924	Cb	4028	29
			4035	29
Colfax (North Carolina)	1880	Om	80	237
*Collescipoli (Italy)	1890	Cb	404	183
Concho (Texas)	1939	Ch	3927	357
			3929	103
			3930	146
			3931	153
*Constantinople (Turkey)	1805	Ap	438	0.2

NAME AND LOCALITY	DATE OF FALL		CATALOGUE	WEIGHT IN
	OR FIND	CLASS		
			1058	1.0
Cookeville (Tennessee)	1913	Og	281	294
Coolac (Australia)	1874	Og	3778	256
Coolidge (Kansas)	1937	Cb	4202	284
Coomandook (Australia)	1939	Cb	4030	1.2
Coonana (Australia)	1962	Cb	4031	18
Coopertown (Tennessee)	1860	Om	101	608
			225	73
Cope (Colorado)	1934	Cb	3782	83
Copiapo (Chile)	1863	O	148	75
Cosby's Creek (Tennessee)	1837	Og	103	182
			107	465
*Cosina (Mexico)	1844	Cb	596	4.9
Costilla Peak (New Mexico)	1881	Om	31	3,645
			3883	1,671
Covert (Kansas)	1896	Cb	3801	10
			3840	142
Cowra (Australia)	1888	Of	158	197
			259	480
Crab Orchard (Tennessee)	1887	M	304	1,270
			902	1,096
Cranberry Plains (Virginia)	1852	Of	226	7.1
Cranbourne (Australia)	1854	Og	159	438
			205	510
			746	663
			767	5.3
Crosbyton (Texas)	1954?	Cb	4032	1.5
*Cross Roads (North Carolina)	1892	Cb	383	57
Cruz del Aire (Mexico)	1911	Of	279	15,010
Cuernavaca (Mexico)	1889	Of	237	292
Cuero (Texas)	1936	Cb	4033	4.8
Culbertson (Nebraska)	1913	Cb	645	6,360
			2560	34
			4045	305
Cullison (Kansas)	1911	Cb	593	442
*Cumberland Falls (Kentucky)	1919	Ae	664	2,453
			667	2.8
			2222	467
Cushing (Oklahoma)	1932	Cb	4034	2.9
*Cynthiana (Kentucky)	1877	Ch	369	407
Dale Dry Lake (California)	1957	Ch	4036	0.9
Dalgaranga (Australia)	1923	Om?	4037	42
Dalgety Downs (Australia)	1941	Ch	4188	11,000
			4189	5,900
			4190	1,108

NAME AND LOCALITY	DATE OF FALL OR FIND	CLASS	CATALOGUE	WEIGHT IN
			No.	GRAMS
			4191	841
			4192	941
			4193	1,066
			4194	428
Dalton (Georgia)	1877	Om	44	73
			244	3.3
*Dandapur (India)	1878	Ch	440	254
*Daniel's Kuil (South Africa)	1868	Ce	441	4.3
*Danville (Alabama)	1868	Ch	350	5.1
*Darmstadt (Germany)	1804	Cb	601	1.5
Davis Mountains (Texas)	1903	Om	276	28
Davy (Texas)	1940	Ch	4038	0.8
*Deal (New Jersey)	1829	Ch	377	0.2
*DeCewsville (Canada)	1887	Cb	442	0.9
Deep Springs (North Carolina)	1846	D	81	184
			690	290
			691	259
Delegate (Australia)	1904	Om	2471	130
De Nova (Colorado)	1940	Ch	4039	0.7
Densmore (Kansas)	1879	Ch	3943	103
Denton County (Texas)	1856	Om	114	13
Deport (Texas)	1926	Og	4178	409
Descubridora (Mexico)	1780	Om	133	2,425
			722	84
Dexter (Texas)	1889	Og	2626	1,276
*Dhurmsala (India)	1860	Ch	443	548
Dimboola (Australia)	1944	Cb	3900	424
			3901	71
Dimmitt (Texas)	1947	Cb	4040	38
			4186	526
Dispatch (Kansas)	1956	Cb	4041	5.4
*Distrito Quebracho (Argentina)	1957	Cb	4042	1.8
*Djati-Pengilon (Java)	1884	Cb	444	143
*Dokachi (Pakistan)	1903	Cb	4043	0.8
*Drake Creek (Tennessee)	1827	Ch	389	23
Duchesne (Utah)	1906	Of	2612	245
Duel Hill (North Carolina)	1854	Of	83	75
Duel Hill (North Carolina)	1873	Og	82	1,493
Duncanville (Texas)	1961	Cb	4044	9.0
Dungannon (Virginia)	1922	Om	2260	533
			2262	18
			2263	7.9
*Durala (India)	1815	Ch	445	36
*Duruma (Kenya)	1853	Ch	446	1.0
Eagle Station (Kentucky)	1880	P	302	177

NAME AND LOCALITY	DATE OF FALL		CLASS	CATALOGUE	WEIGHT IN
	OR FIND			No.	GRAMS
*Ehole (Angola)	1961		Cb	4046	1.5
*Eichstadt (Germany)	1785		Cb	447	1.7
				3817	3.6
*Ekh Khera (India)	1916		Cb	4047	1.0
*Elbogen (Czechoslovakia)	1400?		Om	182	36
				3852	11
El Burro (Mexico)	1939		Og	3771	315
El Capitan (New Mexico)	1893		Om	69	1,772
				257	1,079
				815	577
				816	809
				818	278
				820	963
				821	831
				822	10
Ellerslie (Australia)	1905		Ch	4048	0.6
Elm Creek (Kansas)	1906		Cb	617	11
				642	248
El Perdido (Argentina)	1905		Cb	663	708
Emmitsburg (Maryland)	1854		Om	58	31
*Ensisheim (France)	1492		Ch	448	127
*Erakot (India)	1940		Cc	4049	2.3
*Ergheo (Somalia)	1889		Ch	579	178
*Erxleben (Germany)	1812		Cb	449	6.3
Espiritu Santo (Mexico)	?		Of	134	35
Esquel (Argentina)	1963		P	4050	9.8
Estacado (Texas)	1883		Cb	587	408
				660	122,700
				2176	47
*Estherville (Iowa)	1879		M	327	2,583
				328-348	170
*Farmington (Kansas)	1890		Ch	368	218
				1027	6,066
*Farmville (North Carolina)	1934		Cb	4052	4.2
*Felix (Alabama)	1900		Cp	4053	0.9
Finmarken (Norway)	1902		P	619	4.5
				996	54
				2185	3.6
Finney (Texas)	1962		Ch	4165	114
*Fisher (Minnesota)	1894		Ch	373	1,768
Fleming (Colorado)	1940		Cb	4054	0.9
*Forest City (Iowa)	1890		Cb	361	48
				655	33,975
				1009	678
				1010	867
				1011	1,283
				1012	1,403
				1013	4,455

NAME AND LOCALITY	DATE OF FALL OR FIND	CLASS	CATALOGUE	WEIGHT IN
			No.	GRAMS
			1121	1,280
			2402	339
			2405	27
			2408	78
			2409	325
			2410	736
			2411	216
			2413	62
			2415	58
			2417	28
			2418	38
			2419	20
			2420	72
			2421	1,645
			2423	21
			2424	81
			2425	24
			2426	50
			2427	11
*Forest Vale (Australia)	1942	Cb	4055	91
*Forsyth (Georgia)	1829	Ch	354	89
Forsyth County (North Carolina)	1891	H	39	906
Fort Pierre (South Dakota)	1856	Om	68	1,827
Four Corners (New Mexico)	1924	O	2486	1,917
Franceville (Colorado)	1890	Om	233	656
*Frankfort (Alabama)	1868	Ap	351	19
Franklin (Kentucky)	1921	Cb	4056	1.3
*Futtehpur (India)	1822	Ch	400	4.0
*Gambat (Pakistan)	1897	Ch	450	44
Garraf (Spain)	1905	Ch	2487	70
*Geidam (Nigeria)	1950	Cb	3953	65
Ghubara (Arabia)	1954	Cb	3972	333
Gibeon (Southwest Africa)	1836	Of	210	2,614
			285	302,000
			775	7,800
			777	10,800
			2601	11
			3752	237,000
			3753	1,019
			4051	529
*Gifu (Japan)	1909	Ch	4057	1.6
Gilgoin (Australia)	1889	Cb	613	3,026
*Girgenti (Italy)	1853	Ch	451	8.9
			3797	85
Gladstone (New Mexico)	1936	Cb	3761	334

NAME AND LOCALITY	DATE OF FALL OR FIND	CLASS	CATALOGUE No.	WEIGHT IN GRAMS
Gladstone (Australia)	1915	Og	2621	16,100
			3776	23
Glasgow (Kentucky)	1922	Og	2261	3,672
Glorieta Mountain (New Mexico)	1884	Om	70	773
			680	24,040
			682	967
			684	3,790
*Gnadenfrei (Poland)	1879	Cb	452	67
Goalpara (India)	1868	Au	453	10
Goodland (Kansas)	1923	Ch	3839	61
Goose Lake (California)	1938	Og	4179	50
Grady No. 2 (New Mexico)	1937	Cb	4058	347
Grand Rapids (Michigan)	1883	Of	60	8,375
Grant County (Kansas)	1936	Ch	4059	0.8
*Grosnaja (U.S.S.R.)	1861	Cp	455	26
*Grossliebenthal (U.S.S.R.)	1881	Ch	454	54
*Grüneberg (Poland)	1841	Cb	456	0.3
			1059	1.1
Gruver (Texas)	1934	Cb	3822	150
Guffey (Colorado)	1907	D	213	309,000
			776	31
Guilford County (North Carolina)	1822	Om	217	4.4
*Hainaut (France)	1934	Cb	4060	0.7
Hainholz (Germany)	1856	M	316	321
Hale Center No. 2 (Texas)	1936	Cb	3774	1.8
*Hallingeberg (Sweden)	1944	Ch	3962	173
*Hamlet (Indiana)	1959	Ch	4061	3.2
Hammond (Wisconsin)	1884	Om	125	842
*Haraiya (India)	1878	Ap	4062	57
*Haripura (India)	1921	Cc	4063	0.7
*Harleton (Texas)	1961	Ch	4064	0.7
Harriman (Tennessee)	1947	Om	4180	121
*Harrison County (Indiana)	1859	Ch	358	1.2
			1003	4.2
Harrisonville (Missouri)	1933	Ch	3827	135
Haven (Kansas)	1950	Cb	4065	0.8
Hayden Creek (Idaho)	1895	Om	277	15
Hayes Center (Nebraska)	1941	Ch	3895	82
Henbury (Australia)	1931	Om	2643	858
			2645	560
			2646	1,014
			2647	1,365
			2649	583
			2650	4,541
			2651	1,240
			2653	4,991

NAME AND LOCALITY	DATE OF FALL OR FIND	CLASS	CATALOGUE	WEIGHT IN
			No.	GRAMS
			2654	2,286
			2656	1,963
			2657	4,599
			2659	1,316
			2660	70
			2661	21
			2662	8.1
			2663	41
			2665	82
			2667	1,330
			2668	126
			2674	15
			2675	184
			2676	146
			2677	21
			3799	35
			3810	39,550
Hendersonville (North Carolina)	1901	Ch	620	179
*Heredia (Costa Rica) Hermitage Plains (Australia)	1857	Cb	457	8.1
	1909	Ch	581	353
*Hessle (Sweden)	1869	Cb	1062	122
Hesston (Kansas) Hex River Mountains (South Africa)	1951	Ch	3836	43
	1882	H	753	2,515
*High Possil (Scotland)	1804	Ch	3818	1.3
Hill City (Kansas)	1947	Of	3794	115
Hoba (Southwest Africa)	1920	D	2628	9.6
			2629	6.5
			2681	352
			3834	106
*Holbrook (Arizona)	1912	Ch	586	1,896
			1125	815
			1128	272
			1137	113
			1156	883
			1173	408
			1180	633
			1217	6,696
			1218	648
			1219	1,362
			1220	1,773
			1221	1,106
			1226	1,120
			1501	547
			1127-2175 ¹	4,783

¹ Excluding those listed above.

NAME AND LOCALITY	DATE OF FALL OR FIND	CLASS	CATALOGUE	WEIGHT IN
			No.	GRAMS
			2735-3734	805
Holland's Store (Georgia)	1887	H	37	213
Holly (Colorado)	1937	Cb	3835	19
*Homestead (Iowa)	1875	Ch	359	318
			1005	7,850
			3853	1,586
Hopper (Virginia)	1889	Om	123	8.0
Howe (Texas)	1938	Cb	4066	0.8
*Hraschina (Yugoslavia)	1751	Om	871	80
Hressk (U.S.S.R.)	1955	H	3862	541
Huckitta (Australia)	1924	P	3772	1,036
			3971	2,730
Hugoton (Kansas)	1927	Cb	3760	137
Huizopa (Mexico)	1907	Of	288	3,047
			2232	524
*Hvittis (Finland)	1901	Ce	2622	129
			4067	67
*Ibbenbühren (Germany)	1870	Ah	461	0.2
Illinois Gulch (Montana)	1899	D	64	269
Imilac (Chile)	1822	P	307	459
			997	4,538
*Indarch (U.S.S.R.)	1891	Ce	2237	17
			3894	161
Indianola (Nebraska)	1939	Ch	4068	0.7
Ioka (Utah)	1931	Ch	4069	2.1
Iquique (Chile)	1871	D	153	63
			743	25
Iredell (Texas)	1898	H	117	180
Iron Creek (Canada)	1869	Om	30	89
*Ishinga (Tanganyika)	1954	Cb	4070	13
Isoulane (Algeria)	1945	Ch	4071	0.4
Ivanpah (California)	1880	Om	23	508
*Ivuna (Tanganyika)	1938	Cc	3963	70
Jackson County (Tennessee)	1846	Om	91	45
*Jajh deh Kot Lalu (Pakistan)	1926	Ce	3954	31
Jamestown (North Dakota)	1885	Of	88	92
*Jelica (Yugoslavia)	1889	Ch	464	595
			1063	158
Jenny's Creek (West Virginia)	1883	Og	124	228
Jerome (Idaho)	1954	Ch	4072	5.8
Jerome (Kansas)	1894	Cb	3891	33
*Jhung (Pakistan)	1873	Ch	465	24
Joe Wright Mountain (Arkansas)	1884	Om	21	277
Johnson City (Kansas)	1937	Ch	3965	485

NAME AND LOCALITY	DATE OF FALL		CATALOGUE		WEIGHT IN
	OR FIND	CLASS	No.	GRAMS	
*Johnstown (Colorado)	1924	Ap	2493	19,220	
			2494	2,196	
			2495	140	
			2496	49	
			2497	494	
Juncal (Chile)	1866	Om	149	165	
*Juvinas (France)	1821	Ap	466	321	
Kaalijarv (U.S.S.R.)	1937	Om	3751	8.8	
*Kaba (Hungary)	1857	Cp	467	1.3	
*Kakangari (India)	1890	C	3956	20	
Kaloonera Hill (Australia)	1956	Cb	3897	528	
*Kamalpur (India)	1942	Ch	4073	0.9	
Kansas City (Missouri)	1903	Cb	3785	22	
*Kapoeta (Sudan)	1942	Ap	3924	38	
			3947	46	
*Karakol (U.S.S.R.)	1840	Ch	468	1.9	
*Karoonda (Australia)	1930	Cp	3903	404	
			3970	910	
Kendall County (Texas)	1887	H	710	368	
			849	12	
Kenton County (Kentucky)	1889	Om	57	9,590	
*Kerilis (France)	1874	Cb	469	0.6	
Kermichel (France)	1911	Ch	580	54	
*Kernouvé (France)	1869	Cb	470	163	
*Kesen (Japan)	1850	Cb	472	6,025	
			3941	41	
Keyes (Oklahoma)	1939	Ch	3808	37	
*Khairpur (Pakistan)	1873	Ce	473	536	
*Khetri (India)	1867	Cb	474	16	
*Khohar (India)	1910	Ch	3784	15	
*Khor Temiki (Sudan)	1932	Ae	3973	111	
*Kikino (U.S.S.R.)	1809	Cb	475	0.8	
*Kilbourne (Wisconsin)	1911	Cb	585	53	
*Killeter (Ireland)	1844	Cb	476	0.2	
Kimble County (Texas)	1918	Cb	4074	6.5	
Kingfisher (Oklahoma)	1950	Ch	3826	80	
Kingston (New Mexico)	1891	Om	209	482	
			774	519	
Klondike (Canada)	1901	D	273	788	
Knowles (Oklahoma)	1903	Of	208	161,000	
			768	22	
			769	33	
			772	11	
*Knyahinya (U.S.S.R.)	1866	Ch	478	970	
			1069	175	
Kokomo (Indiana)	1862	D	48	9.0	
Kota-Kota (Nyasaland)	1905	Ce	4075	2.2	
Krasnojarsk (U.S.S.R.)	1749	P	896	212	

NAME AND LOCALITY	DATE OF FALL OR FIND	CLASS	CATALOGUE	WEIGHT IN
			No.	GRAMS
			897	939
*Kuleschovka (U.S.S.R.)	1811	Ch	479	13
Kulnine (Australia)	1886	Ch	3898	471
*Kunashak (U.S.S.R.)	1949	Ch	3916	387
*Kyushu (Japan)	1886	Ch	493	7,800
			522	717
			1072	319
			1073	2.9
			1092	5.7
			2238	5.2
			2239	4.3
*La Bécasse (France)	1879	Ch	658	21
			2221	9.3
*Laborel (France)	1871	Cb	480	66
La Caille (France)	1828	Om	186	29
Ladder Creek (Kansas)	1937	Ch	3830	4,670
			4076	43
La Grange (Kentucky)	1860	Of	51	56
*L'Aigle (France)	1803	Ch	481	157
*Lakangaon (India)	1910	Ap	4077	1.1
Lake Bonney (Australia)	1963	Ch	4078	19
			4079	21
Lake Brown (Australia)	1919	Ch	4173	137
Lake Grace (Australia)	1958	Ch	4080	21
Lake Labyrinth (Australia)	1934	Ch	2682	26
			2683	688
			2684	13
			2685	40
Laketon (Texas)	1937	Ch	3824	202
La Lande (New Mexico)	1933	Ch	3823	144
*Lancé (France)	1872	Cp	618	3.5
*Lancon (France)	1897	Cb	482	7.0
			665	87
La Primitiva (Chile)	1888	H	152	174
Laurens County (South Carolina)	1857	Of	95	40
*Leedey (Oklahoma)	1943	Ch	3955	7.0
Lénártó (Czechoslovakia)	1814	Om	183	119
			756	54
*Leonovka (U.S.S.R.)	1900	Ch	4082	1.2
*Le Pressoir (France)	1845	Ch	632	14
*Lesves (Belgium)	1896	Ch	484	102
*Le Teilleul (France)	1845	Ap	650	3.7
Lexington County (South Carolina)	1880	Og	96	211
Lime Creek (Alabama)	1834	D	4	130
*Limerick (Ireland)	1813	Cb	485	31
			3843	118
*Linum (Germany)	1854	Ch	4083	1.5

NAME AND LOCALITY	DATE OF FALL OR FIND	CLASS	CATALOGUE	WEIGHT IN
			No.	GRAMS
Linville (North Carolina)	1882	D	85	60
Linwood (Nebraska)	1940	Og	3789	1,083
*Lissa (Czechoslovakia)	1808	Ch	486	220
*Little Piney (Missouri)	1839	Ch	375	9.9
*Lixna (U.S.S.R.)	1820	Cb	487	53
Locust Grove (Georgia)	1857	H	40	325
*Lodran (India)	1868	L	314	31
Lonaconing (Maryland)	1888	Og	59	99
Long Island (Kansas)	1891	Ch	367	339
			661	12,231
			1023	866
			1024	1,073
			1025	6,690
			2268	463
			2269	610
			2270	388
			2271	320
			2272	608
			2273	110
			2274	672
			2275	190
			2277	298
			2278	452
			2279	518
			2280	362
			2281	626
			2282	218
			2283	404
			2284	213
			2285	253
			2286	456
			2287	409
			2288	1,272
			2289	850
			2290	1,340
			2291	334
			2292	237
			2293	14,840
			2294	11,937
			2295	168
			2296	88
			2297	99
			2298	84
			2299	54
			2300-2400	4,315
			2501-2512	93
Loongana (Australia)	1948	Ch	4084	20
			4184	16

NAME AND LOCALITY	DATE OF FALL OR FIND	CLASS	CATALOGUE No.	WEIGHT IN GRAMS
Losttown (Georgia)	1868	Om	38	320
			2538	217
			2539	68
			2540	27
			2541	39
			2542	206
*Lowicz (Poland)	1935	M	3775	396
*Lucé (France)	1768	Ch	489	0.2
Lucky Hill (Jamaica)	1885	Om	239	15
Luis Lopez (New Mexico)	1896	Om	204	362
*Lumpkin (Georgia)	1869	Cb	355	24
*Lundsgård (Sweden)	1889	Ch	609	107
*Luotolax (Finland)	1813	Ap	4085	1.4
*Luponnas (France)	1753	Cb	491	1.0
*Mabwe-Khoywa (Burma)	1937	Ch	4086	0.9
*Macáu (Brazil)	1836	Cb	492	22
Madoc (Canada)	1854	Of	29	27
Magura (Czechoslovakia)	1840	Og	184	927
			2264	30
			2594-2599	109
Mainz (Germany)	1852	Ch	494	114
Makarewa (New Zealand)	1879	Ch	495	14
*Malampaka (Tanganyika)	1930	Cb	4087	16
*Malotas (Argentina)	1931	Cb	3952	140
*Manbhoom (India)	1863	Ch	496	483
*Mangwendi (Southern Rhodesia)	1934	Ch	3974	461
Mantos Blancos (Chile)	1876	Of	150	34
Maria Elena (Chile)	1935	Of	4181	327
*Marion (Iowa)	1847	Ch	590	223
Marion (Kansas)	1955	Ch	4166	32
*Marjalahti (Finland)	1902	P	4088	60
Marlow (Oklahoma)	1936	Ch	4089	1.3
*Marmande (France)	1848	Ch	497	0.7
Marshall County (Kentucky)	1860	Om	223	20
Marsland (Nebraska)	1933	Cb	4203	129
Mart (Texas)	1898	Of	119	202
*Mauerkirchen (Austria)	1768	Ch	498	83
*Mauritius (Indian Ocean)	1801	Ch	499	1.4
*Mazapil (Mexico)	1885	Om	136	93
*Maziba (Uganda)	1942	Ch	3798	45
McAdoo (Texas)	1935	Ch	3764	956
McKinney (Texas)	1870	Ch	391	1,686
			595	633
			1037	2,750
			2177	327
			3749	29

NAME AND LOCALITY	DATE OF FALL OR FIND	CLASS	CATALOGUE	WEIGHT IN
			No.	GRAMS
			3847	24
Mejillones (Chile)	1905	H	3780	311
Melrose (New Mexico)	1933	Ch	2642	599
*Menow (Germany)	1862	Cb	477	18
Merceditas (Chile)	1884	Om	151	1,251
			741	10,149
*Mern (Denmark)	1878	Ch	611	24
*Merua (India)	1920	Cb	4090	1.3
Metsäkylä (Finland)	1938	Cb	4091	2.4
*Mező-Madaras (Romania)	1852	Ch	3889	17
*Middlesbrough (England)	1881	Ch	4092	1.2
*Mighei (U.S.S.R.)	1889	Cc	500	27
			4156	9.3
*Mike (Hungary)	1944	Ch	4093	3.3
*Milena (Yugoslavia)	1842	Ch	501	14
*Miller (Arkansas)	1930	Cb	2624	15,500
			2625	716
Miller (Kansas)	1950	Cb	3838	44
			4094	45
Milly Milly (Australia)	1921	Om	4172	230
Minas Gerais (Brazil)	1888	Ch	615	3.9
			2184	2.2
Mincy (Missouri)	1857	M	887	2,032
*Misshof (U.S.S.R.)	1890	Cb	502	151
Misteca (Mexico)	1804	Om	734	140
*Mjelleim (Norway)	1898	Cb	4095	1.1
*Mocs (Romania)	1882	Ch	503	28
			1076	98
			1077	516
			1078	339
			1081	25
			1082	11
			1083	230
Moctezuma (Mexico)	1899	Om	137	177
*Modoc (Kansas)	1905	Ch	604	9,110
			630	1,405
			2187	1,258
			2188	732
			2192	349
			2195	89
			2196	343
			2198	544
			2438	19
			2444	2,317
			2445	887
			2446	182
			2450	197
			2451	188

NAME AND LOCALITY	DATE OF FALL OR FIND	CLASS	CATALOGUE	WEIGHT IN
			No.	GRAMS
			2452	290
			2457	349
*Mokoia (New Zealand)	1908	Cc	3906	45
*Molina (Spain)	1858	Ch	504	8.4
Molong (Australia)	1912	P	998	294
			2462	66
			2463	60
Monahans (Texas)	1938	D	3792	333
*Monroe (North Carolina)	1849	Cb	381	80
Mooranoppin (Australia)	1893	Og	160	175
*Mooresfort (Ireland)	1810	Ch	505	43
			1084	1.4
*Moorleah (Tasmania)	1930	Ch	4096	1.5
Morito (Mexico)	1600	Om	222	4.9
Morland (Kansas)	1890	Cb	3829	278
*Mornans (France)	1875	Cb	507	18
Morristown (Tennessee)	1887	M	305	356
Morven (New Zealand)	1925	Cb	4097	19
*Moti-ka-nagla (India)	1868	Cb	508	71
Mount Ayliff (South Africa)	1907	Og	2228	207
*Mount Browne (Australia)	1902	Cb	4098	55
Mount Dyrring (Australia)	1903	P	2464-2470	20
			3967	594
Mount Edith (Australia)	1913	Om	242	8,750
Mount Joy (Pennsylvania)	1887	Og	92	773
			256	47
			2514-2529	239
Mount Magnet (Australia)	1916	Of	4171	52
Mount Morris (Wisconsin)	1937	C?	4099	13
Mount Stirling (Australia)	1892	Og	295	1,464
Mount Vernon (Kentucky)	1868	P	324	5.2
			899	11
*Muddoor (India)	1865	Cb	509	228
Muizenberg (South Africa)	1880	Ch	4100	3.4
Mungindi (Australia)	1897	Of	280	7,300
Muonionalusta (Sweden)	1906	Of	3796	124
*Muraid (Pakistan)	1924	Ch	4101	0.8
Murfreesboro (Tennessee)	1847	Om	106	74
Murphy (North Carolina)	1899	H	294	559
*Murray (Kentucky)	1950	Cc	4102	20
Nagy-Vázsony (Hungary)	1890	Om	185	218
*Nakhla (Egypt)	1911	Ad	3887	66
*Nammianthal (India)	1886	Cb	510	6.1
Nardoo No. 1 (Australia)	1944	Cb	4103	0.5
Nardoo No. 2 (Australia)	1944	Ch	4104	0.9
*Narellan (Australia)	1928	Ch	4105	1.5
Naretha (Australia)	1915	Ch	4183	8.5
Narraburra (Australia)	1855	Of	168	41

NAME AND LOCALITY	DATE OF FALL		CLASS	CATALOGUE	WEIGHT IN
	OR FIND			No.	GRAMS
Neenach (California)	1948		Ch	3911	58
Negrillos (Chile)	1936		H	3925	24
Nejed (Arabia)	1863		Om	293	1,819
Nelson County (Kentucky)	1856		Og	52	346
*Nerft (U.S.S.R.)	1864		Ch	511	252
Ness County (Kansas)	1894		Ch	364	1,570
				612	213
				644	481
				657	2,433
				1014	1,630
				1017	1,638
				1019	584
				1123	412
				2180	741
				2181	494
				2182	157
				2202	61
				2209	125
				2210	172
				2211	71
				2212	233
				2216	12
				2217	136
				2218	68
				2488	2,862
				2554	172
				2589	49
				2590	168
				2696	25
Netschaevo (U.S.S.R.)	1846		O	195	28
New Almelo (Kansas)	1917		Ch	4106	0.8
New Baltimore (Pennsylvania)	1922		Og	3793	430
*New Concord (Ohio)	1860		Ch	385	239
				1035	1,449
*Ngawi (Java)	1883		Cp	512	1.1
*N'Goureyima (Mali)	1900		O	224	852
*Nobleborough (Maine)	1823		Ap	597	0.6
Nocoleche (Australia)	1895		Om	164	2,007
*Nogoya (Argentina)	1879		Cc	513	8.2
Norfolk (Virginia)	1907		Om	2266	20,963
				2686	338
*Norton County (Kansas)	1948		Ae	3846	249
*Novo-Urei (U.S.S.R.)	1886		Au	514	12
*Nuevo Laredo (Mexico)	1926		Ap	4107	4.8
Oakley (Kansas)	1895		Cb	362	733
Oberlin (Kansas)	1911		Ch	3832	100
Obernkirchen (Germany)	1863		Of	189	21

NAME AND LOCALITY	DATE OF FALL		CATALOGUE	WEIGHT IN
	OR FIND	CLASS		
*Ochansk (U.S.S.R.)	1887	Cb	557	170
			1112	9.9
			1113	3.3
			2545-2552	51
Odessa (Texas)	1922	Og	3766	671
			3767	14
			3802	32
			3803	660
*Oesel (U.S.S.R.)	1855	Ch	471	3.2
*Ó-Fehértó (Hungary)	1900	Ch	4108	10
*Ogi (Japan)	1741	Cb	516	16
*Ohaba (Romania)	1857	Cb	518	1.1
*Okano (Japan)	1904	H	858	205
*Okniny (U.S.S.R.) Oktibbeha County (Mississippi)	1854	D	62	13
*Olivenza (Spain)	1924	Ch	3885	1,747
Ollague (Bolivia)	1924	P	2606	293
*Olmedilla de Alarcón (Spain) Orange River (South Africa)	1929	Cb	3896	39
*Orgueil (France)	1864	Cc	176	91
			519	48
Orlovka (U.S.S.R.)	1928	Cb	4109	14
			3917	123
*Ornans (France)	1868	Cp	520	9.8
Oroville (California)	1893	Om	24	282
*Orvinio (Italy) Osuro Mountains (New Mexico)	1872	Ch	521	2.9
			1895	Og
			3777	44
*Oterøy (Norway)	1928	Ch	4110	3.7
*Ottawa (Kansas)	1896	Ch	366	269
			1021	4.3
			2248	1.6
Otumpa (Argentina)	1576	H	144	116
			3957	13,200
			3958	10,000
			3959	5,900
			3960	2,700
			3961	2,900
Ovid (Colorado)	1939	Cb	4111	1.6
Owens Valley (California)	1913	Om	2636	32,630
Ozona (Texas)	1929	Cb	3750	23
*Pacula (Mexico)	1881	Ch	523	291
*Pantar (Philippine Islands)	1938	Cb	3949	42
*Paragould (Arkansas)	1930	Ch	3758	3,778
*Parnallee (India)	1875	Ch	524	501

NAME AND LOCALITY	DATE OF FALL		CATALOGUE	WEIGHT IN
	OR FIND	CLASS		
			1096	1,039
*Pasamonte (New Mexico)	1933	Ap	3759	46
*Patwar (Pakistan)	1935	M	4112	234
Paulding County (Georgia)	1901	Og	231	19
			2233	81
Pavlodar (U.S.S.R.)	1885	P	319	23
*Pavlograd (U.S.S.R.)	1826	Ch	506	9.7
*Pavlovka (U.S.S.R.)	1882	Ap	525	3.8
Peck's Spring (Texas)	1926	Ch	4113	1.0
*Peña Blanca Spring (Texas)	1946	Ae	4114	4.0
*Perpeti (Pakistan)	1935	Ch	4115	0.9
Perryville (Missouri)	1906	Of?	241	137
Persimmon Creek (North Carolina)	1903	Of	873	14
*Pervomaisky (U.S.S.R.)	1933	Ch	3918	178
*Petersburg (Tennessee)	1855	Ap	388	12
			2252	1.2
*Pillistfer (U.S.S.R.)	1863	Ce	526	125
Pine River (Wisconsin)	1931	Og	3935	7.0
Pinnaroo (Australia)	1927	M	3950	248
Pinto Mountains (California)	1954	Ch	4116	2.0
Pipe Creek (Texas)	1887	Cb	390	313
*Pirgunje (India)	1882	Ch	528	24
*Pirhalla (India)	1884	Cb	529	2.2
*Pitts (Georgia)	1921	Of	2254	47
Pittsburgh (Pennsylvania)	1850	Og	93	4.4
Plainview (Texas)	1917	Cb	656	1,947
			2219	1,461
			2220	596
			3773	14
Plainview No. 2 (Texas)	1950	Cb	4117	2.0
*Plantersville (Texas)	1930	Cb	3769	59
*Ploschkovitz (Czechoslovakia)	1723	Ch	594	7.9
Plymouth (Indiana)	1893	Om	49	3,645
*Pokhra (India)	1866	Cb	3816	0.4
Ponca Creek (Nebraska)	1863	Og	35	27
Potter (Nebraska)	1941	Ch	3804	4,981
Prairie Dog Creek (Kansas)	1893	Cb	365	648
*Pricetown (Ohio)	1893	Ch	384	480
*Pultusk (Poland)	1868	Cb	530	286
			1099	9.6
			1100	125
			1101	2.3
			1103	659
Puquios (Chile)	1885	Om	154	1,621
Putnam County (Georgia)	1839	Of	42	35

NAME AND LOCALITY	DATE OF FALL		CATALOGUE	WEIGHT IN
	OR FIND	CLASS		
Queensland (Australia)	1894	Og	165	94
*Queens Mercy (South Africa)	1925	Cb	3975	336
*Quenggouk (Burma)	1857	Cb	533	992
Quinn Canyon (Nevada)	1908	Og	274	13
*Rakovka (U.S.S.R.)	1878	Ch	534	337
*Ramnagar (India)	1940	Ch	4118	0.6
*Rampurhat (India)	1916	Ch	4119	0.9
*Ramsdorf (Germany)	1958	Ch	3914	8.3
Rancho de la Pila (Mexico)	1882	Om	138	375
*Rancho de la Presa (Mexico)	1899	Cb	2623	36
Ransom (Kansas)	1938	Cb	3821	86
Red River (Texas)	1808	Om	113	80
			707	168
Reed City (Michigan)	1895	Og	230	296
*Reliegos (Spain)	1947	Ch	3976	280
*Renazzo (Italy)	1824	Cc	588	15
*Renca (Argentina)	1925	Ch	4120	5.0
*Richardton (North Dakota)	1918	Cb	662	8,320
			3884	102
*Richmond (Virginia)	1828	Ch	535	15
*Rich Mountain (North Carolina)	1903	Ch	3783	38
*Rochester (Indiana)	1876	Cb	357	1.2
Rodeo (Mexico)	1852	Of	2227	77
Roebourne (Australia)	1892	Om	166	2,371
Rosario (Honduras)	1896	Og	143	1,540
*Rose City (Michigan)	1921	Cb	2255	218
			3737	4,473
Rowena (Australia)	1963	Cb	4121	110
Roy (New Mexico)	1933	Ch	3762	1,435
Ruff's Mountain (South Carolina)	1844	Om	97	125
Rush Creek (Colorado)	1938	Ch	4122	3.1
Rushville (Indiana)	1866	Ch	356	22
Russel Gulch (Colorado)	1863	Of	34	5,052
Sacramento Mountains (New Mexico)	1896	Om	72	882
			686	3,870
St. Ann (Nebraska)	1938	Cb	4123	8.2
*St. Caprais-de-Quinsac (France)	1883	Ch	3814	6.9
St. Francois County (Missouri)	1863	Og	65	312
St. Genevieve County (Missouri)	1888	Of	66	3,708

NAME AND LOCALITY	DATE OF FALL OR FIND	CLASS	CATALOGUE No.	WEIGHT IN GRAMS
*St. Mark's (South Africa)	1903	Ce	653	5.4
			4124	170
*St. Mesmin (France)	1866	Ch	651	21
*St. Michel (Finland)	1910	Ch	608	752
St. Peter (Kansas)	?	Ch	3936	12
			4125	29
*St. Sauveur (France)	1914	Ce	4126	3.8
Saline (Kansas)	1901	Cb	584	39
Salla (Finland)	1963	Ch	4170	19
*Salles (France)	1798	Cb	536	14
Salt River (Kentucky)	1850	Of	227	61
Sams Valley (Oregon)	1894	Om	278	1,090
			2608	895
San Angelo (Texas)	1897	Om	120	610
			711	228
			3848	95
San Carlos (Argentina)	1942	Cb	4127	7.2
San Cristobal (Chile)	1882	D	2229	853
San Emigdio (California)	1887	Cb	352	4.1
			624	6.3
San Francisco del Mezquital (Mexico)	1868	H	140	36
San Pedro Springs (Texas)	1887	Ch	537	49
Sandia Mountains (New Mexico)	1925	H	4204	57
Santa Apollonia (Mexico)	1872	Om	3770	379
Santa Catharina (Brazil)	1875	D	146	488
			735	392
			736	497
			3948	113
Santa Luzia (Brazil)	1921	Og	3781	1,525
Santa Rosa (Colombia)	1810	O	232	3,503
			234	3,149
São Julião de Moreira (Portugal)	1883	Og	187	1,764
			3849	301
Sarepta (U.S.S.R.)	1854	Og	197	95
*Savtschenskoje (U.S.S.R.)	1894	Ch	539	41
*Schellin (Poland)	1715	Ch	591	0.7
*Schönenberg (Germany)	1846	Ch	541	50
Schwetz (Poland)	1850	Om	283	21
Scott City (Kansas)	1905	Cb	659	140
Scottsville (Kentucky)	1867	H	50	533
*Searsmont (Maine)	1871	Cb	370	46
Seeläsgen (Poland)	1847	Og	191	190
			250	68
*Segowlie (India)	1853	Ch	542	4.0
Selma (Alabama)	1906	Cb	2223	28,312

NAME AND LOCALITY	DATE OF FALL OR FIND	CLASS	CATALOGUE	WEIGHT IN
			No.	GRAMS
			2556	980
			3854	140
			3855	21,291
			3856	742
			3857	509
			3858	1,400
			3859	1,201
			3860	72
			3861	76,104
*Semarkona (India)	1940	C	4128	30
*Sena (Spain)	1773	Cb	4129	45
Seneca Falls (New York)	1850	Om	76	44
Seneca Township (Michigan)	1923	Om	3756	190
*Serres (Greece)	1818	Cb	544	11
*Serre de Magé (Brazil)	1923	Ap	3786	20
			3787	9.6
*Sete Lagoas (Brazil)	1908	Cb	3788	3.7
*Sevrukovo (U.S.S.R.)	1874	Ch	545	34
			1107	5.4
*Shalka (India)	1850	Ah	546	98
Shallowater (Texas)	1936	Ae	4130	2.4
Shaw (Colorado)	1937	Ch	4131	24
*Shelburne (Canada)	1904	Ch	583	58
*Sherghotty (India)	1865	Ap	605	7.2
			3937	42
*Shikarpur (India)	1921	Ch	4132	0.9
Shingle Springs (California)	1869	D	26	106
Shrewsbury (Pennsylvania)	1907	Om	212	563
*Shytaal (India)	1863	Ch	547	25
*Siena (Italy)	1794	Ch	548	44
Sierra Gorda (Chile)	1898	H	3779	315
Signal Mountain (Mexico)	1919	Om	291	57,833
			865	13
			866	6.6
*Sikhote-Alin (U.S.S.R.)	1947	Og	3919	375
Silver Crown (Wyoming)	1887	Og	127	136
*Sioux County (Nebraska)	1933	Ap	4133	4.2
Siratik (Mali)	1716	H	84	25
			179	190
			218	36
*Sitathali (India)	1875	Cb	550	36
*Ski (Norway)	1848	Ch	551	0.5
*Slobodka (U.S.S.R.)	1818	Ch	4134	0.7
Smith Center (Kansas)	1937	Ch	4135	1.4
Smithland (Kentucky)	1839	D	54	40
Smith's Mountain (North Carolina)	1863	Of	87	485

NAME AND LOCALITY	DATE OF FALL		CATALOGUE No.	WEIGHT IN GRAMS
	OR FIND	CLASS		
Smithville (Tennessee)	1840	Og	108	3,269
			699	3,869
			701	3,000
			876	6,435
*Soko-Banja (Yugoslavia)	1877	Ch	552	167
*Soroti (Uganda)	1945	Of	3809	61
South Bend (Indiana)	1893	P	995	58
Springwater (Canada)	1931	P	2641	493
*Ställdalen (Sweden)	1876	Cb	610	285
			2265	159
*Stannern (Czechoslovakia)	1808	Ap	554	44
Staunton (Virginia)	1858	Om	122	1,143
*Stavropol (U.S.S.R.)	1857	Ch	555	48
Steinbach (Germany)	1724	S	315	76
			901	8.8
Stonington (Colorado)	1942	Cb	4136	1.4
Sublette (Kansas)	1952	Ch	4137	60
Summit (Alabama)	1890	H	1	33
*Tabor (Czechoslovakia)	1753	Cb	556	42
*Tadjera (Algeria)	1867	Ch	558	35
Taiban (New Mexico)	1934	Ch	4138	1.7
*Takenouchi (Japan)	1880	Cb	563	9.4
Tamarugal (Chile)	1903	Om	2461	11,200
*Tatahouine (Tunisia)	1931	Ah	4139	5.3
*Tauq (Iraq)	1929	Ch	3977	216
Tawallah Valley (Australia)	1939	D	4140	217
Tazewell (Tennessee)	1853	Of	703	68
			3795	300
			4167	64
Temple (Texas)	1959	Ch	4167	64
*Tenham (Australia)	1879	Ch	3966	986
Tennant's Iron (U.S.S.R.)	1784	Og	238	4.1
*Tennasilm (U.S.S.R.)	1872	Ch	549	91
			1109	4.5
			3893	84
Texline (Texas)	1937	Cb	3746	657
Thunda (Australia)	1881	Om	167	391
Thurlow (Canada)	1888	Of	27	136
*Tieschitz (Czechoslovakia)	1878	Cp	560	6.2
			4141	6.6
*Tilden (Illinois)	1927	Ch	3915	993
*Timochin (U.S.S.R.)	1807	Cb	561	24
*Tjabé (Java)	1869	Cb	562	1.2
Tlacotepec (Mexico)	1903	D	2640	2,786
Toluca (Mexico)	1776	Om	141	173
			201	11
			725	243
			726	386
			727	1,739

NAME AND LOCALITY	DATE OF FALL OR FIND	CLASS	CATALOGUE	WEIGHT IN
			No.	GRAMS
			728	4,444
			729	457
			731	565
			809	1,127
			3863	488
*Tomatlan (Mexico)	1879	Cb	406	65
			1114	7.4
Tombigbee River (Alabama)	1859	H	2	1,008
Tomhannock Creek (New York)	1863	Cb	379	92
			1034	1,082
Tonganoxie (Kansas)	1886	Om	55	321
Toubil River (U.S.S.R.)	1891	Om	196	38
			761	305
*Toulouse (France)	1812	Cb	1116	14
*Tourinnes-la-Grosse (Belgium)	1863	Ch	566	111
Travis County (Texas)	1889	Cb	567	9.8
Trenton (Wisconsin)	1858	Om	126	500
			3945	261
*Trenzano (Italy)	1856	Cb	568	377
*Treysa (Germany)	1916	Om	3905	214
*Tromøy (Norway)	1950	Cb	3938	8.5
Tryon (Nebraska)	1934	Ch	3828	258
*Trysil (Norway)	1927	Ch	4142	11
Tucson (Arizona)	1850	D	221	510
Tulia (Texas)	1917	Cb	3890	44
Twentynine Palms (California)	1955	Ch	4143	3.2
*Tysnes Island (Norway)	1884	Cb	569	10
			1117	10
			3908	74
			3909	55
			3910	7
*Uberaba (Brazil)	1903	Cb	648	10
			654	74
*Udei Station (Nigeria)	1927	M	3946	137
*Udipi (India)	1866	Cb	570	14
*Ufana (Tanganyika)	1957	Ce	4144	3.2
Umm Tina (Arabia)	1932	Ch	3978	14
Union County (Georgia)	1853	Og	43	59
Ute Pass (Colorado)	1894	Og	33	54
*Utrecht (Holland)	1843	Ch	571	1.3
			1118	1.5
*Utzenstorf (Switzerland)	1928	Cb	4145	1.5
Uvalde (Texas)	1915	Cb	4146	5.3
Vaca Muerta (Chile)	1861	M	310	43

NAME AND LOCALITY	DATE OF FALL OR FIND	CLASS	CATALOGUE	WEIGHT IN
			No.	GRAMS
			311	57
			890	4,876
			891	1,176
			892	87
			893	114
			908-986	1,385
Valkeala (Finland)	1962	Ch	4147	9.3
Valley Wells (California)	1929	Ch	2616	14
			2618	82
*Vavilovka (U.S.S.R.)	1876	Ch	572	25
Vera (Argentina)	1947	Ch	4148	2.8
*Veramin (Iran)	1880	M	313	123
Verkhne Dnieprovsk (U.S.S.R.)	1876	Of	198	77
Verkhne Udinsk (U.S.S.R.)	1854	Om	199	208
*Vernon County (Wisconsin)	1865	Cb	573	1.8
*Victoria West (South Africa)	1860	Of	178	1.6
*Vigarano (Italy)	1910	Cp	2226	319
Vincent (Australia)	1930	Ch	4149	1.5
*Visuni (Pakistan)	1915	Cb	4150	2.8
*Vouillé (France)	1831	Ch	574	176
Waconda (Kansas)	1873	Ch	363	119
Wairarapa Valley (New Zealand)	1864	Cb	641	7.2
Waldron Ridge (Tennessee)	1887	Og	111	372
Walker County (Alabama)	1832	H	6	41
			297	30
Wallapai (Arizona)	1927	Of	3791	499
Warialda (Australia)	1919	H	2231	93
*Warrenton (Missouri)	1877	Cp	376	63
			4151	28
Washington County (Colorado)	1927	D	3951	13
Weekeroo Station (Australia)	1924	Og	2620	3,188
Welland (Canada)	1888	Om	28	261
Wellman (Texas)	1940	Cb	4152	2.5
*Wessely (Czechoslovakia)	1831	Cb	575	6.9
*Weston (Connecticut)	1807	Cb	353	249
			3800	9.0
Wichita County (Texas)	1836	Og	712	1,662
			3850	57
Wickenburg (Arizona)	1940	Ch	3833	640
Willamette (Oregon)	1902	Om	203	14 tons
			2234	2,067
Williamstown (Kentucky)	1892	Om	245	860
			787	643

NAME AND LOCALITY	DATE OF FALL OR FIND	CLASS	CATALOGUE	WEIGHT IN
			No.	GRAMS
			788	647
			790	607
			791	220
			794	11
			797	58
			798	54
			804	31
			805	989
			806	20
			807	12,725
Willowdale (Kansas)	1951	Cb	4153	207
Winona (Arizona)	1928	M	3768	154
			4158	238
*Wold Cottage (England)	1795	Ch	577	43
Wolf Creek (Australia)	1947	O?	3844	430
			4195	2,410
			4196	1,945
			4197	2,630
			4198	2,005
			4199	2,270
			4200	1,060
Wood's Mountain (North Carolina)	1918	Of	3755	68
Woodward County (Oklahoma)	1933	Cb	4182	182
*Woolgorong (Australia)	1960	Ch	4175	700
Wooster (Ohio)	1858	Om	90	4.3
Wray (Colorado)	1936	Cb	4154	1.1
Yalgoo (Australia)	1937	Ch	4155	6.4
Yandama (Australia)	1914	Ch	3899	206
*Yatoor (India)	1852	Cb	578	65
			1122	1.4
Yenberrie (Australia)	1918	Og	290	3,760
*Yonōzu (Japan)	1837	Cb	3920	100
			3921	40
York (Nebraska)	1878	Om	287	701
*Yorktown (New York)	1869	Ch	380	5.5
Youndegin (Australia)	1884	Og	296	3,227
Ysleta (Texas)	?	Of	271	87
			286	140,430
			4185	191
*Zaborzika (U.S.S.R.)	1818	Ch	428	1.6
*Zabrodje (U.S.S.R.)	1893	Ch	490	1.4
Zacatecas (Mexico)	1792	H	732	71
Zaffra (Oklahoma)	1919	Og	2614	1,229
*Zavid (Yugoslavia)	1897	Ch	540	836
*Zebrak (Czechoslovakia)	1824	Cb	531	149
*Zmenj (U.S.S.R.)	1858	Ap	437	6.8

NAME AND LOCALITY	DATE OF FALL		CATALOGUE No.	WEIGHT IN GRAMS
	OR FIND	CLASS		
*Zomba (Nyasaland)	1899	Ch	3979	242
*Zsady (Romania)	1875	Cb	649	5.0

LIST OF METEORITES ACCORDING TO CLASS

In the following list the total weight in the collection of each meteorite is given in grams, rounded to the nearest gram. As in the alphabetical list, an asterisk indicates an observed fall.

ENSTATITE CHONDRITES

*Abee, 1514; *Adhi Kot, 98; Atlanta, 142; Bethune, 16; Blithfield, 176; *Daniel's Kuil, 4; *Hvittis, 186; *Indarch, 178; *Jajh deh Kot Lalu, 31; *Khairpur, 536; Kota-Kota, 2; *Pillistfer, 125; *St. Mark's, 175; *Saint-Sauveur, 4; *Ufana, 3.

OLIVINE-BRONZITE CHONDRITES

*Aarhus, 3; Achilles, 139; Acme, 10; Adams County, 1; Adrian, 1; *Agen, 77; Akron No. 2, 1; *Akwanga, 1; Alamogordo, 365; *Alessandria, 9; *Allegan, 97; *Ambapur Nagla, 87; *Andura, 1; *Archie, 46; *Assisi, 5; Aurora, 3; *Barbotan, 89; *Bath, 2816; *Beardsley, 160; *Beaver Creek, 2782; *Beddgelert, 1; *Bethlehem, 3; *Bielokrynitschie, 30; *Bishunpur, 6; *Blansko, 3; Bonita Springs, 374; *Breitscheid, 25; *Bur-Gheluai, 469; *Butsura, 53; *Canellas, 1; *Cangas de Onis, 3; *Cape Girardeau, 36; Capilla del Monte, 8; Caroline, 1; Cashion, 79; *Castalia, 123; Cavour, 3; Cedar, 1; *Cereseto, 1; *Charsonville, 310; *Charwallas, 1; Clovis, 13; Cobija, 274; Cocklebidy, 141; Colby, 1; Coldwater, 58; *Collescipoli, 183; Coolidge, 284; Coomandook, 1; Coonana, 18; Cope, 83; *Cosina, 5; Covert, 152; Crosbyton, 2; *Cross Roads, 57; Cuero, 5; Culbertson, 6699; Cullison, 442; Cushing, 3; *Darmstadt, 2; *DeCewsville, 1; Dimboola, 495; Dimmitt, 544; Dispatch, 5; *Distrito Quebracho, 2; *Djati-Pengilon, 143; *Dokachi, 1; Duncanville, 9; *Ehole, 2; *Eichstadt, 6; *Ekh Khera, 1; Elm Creek, 259; El Perdido, 708; *Erleben, 6; Estacado, 123,155; *Farmville, 4; Fleming, 1; *Forest City, 47,820; *Forest Vale, 91; Franklin, 1; *Geidam, 65; Ghubara, 333; Gilgoin, 3026; Gladstone, 334; *Gnadenfrei, 67; Grady No. 2, 347; *Grüneberg, 1; Gruver, 150; *Hainaut, 1; Hale Center No. 2, 2; Haven, 1; *Heredia, 8; *Hessle, 122; Holly, 19; Howe, 1; Hugoton, 137; *Ishinga, 13; Jerome, 33; Kaldoonera Hill, 528; Kansas City, 22; *Kerilis, 1; *Kernouvé, 163; *Kesen, 6087; *Khetri, 16; *Kikino, 1; *Kilbourne, 53; *Killeter, 1; Kimble, 7; *Laborel, 66; *Lancon, 94; *Limerick, 149; *Lixna, 53; *Lumpkin, 24; *Luponas, 1; *Macáu, 22; *Malampaka, 16; *Malotas, 140; Marsland, 129; *Menow, 18; *Merua, 1; Metsäkylä, 2; *Miller (Arkansas), 16,216; Miller (Kansas), 89; *Misshof, 151; *Mjelleim, 1; *Monroe, 80; Morland, 278; *Mornans, 18; Morven, 19; *Moti-ka-nagla, 71; *Mount Browne, 55; *Muddoor, 228; *Nammianthal, 6; Nardoo No. 1, 1; Oakley, 733; *Ochansk, 234; *Ogi, 16; *Ohaba, 1; *Olmedilla de Alarcón, 39; Orlovka, 123; Ovid, 2; Ozona, 23; *Pantar, 42; Pipe Creek, 313; *Pirhalla, 2; Plainview, 4018; Plainview No. 2, 2; *Plantersville, 59; *Pokhra, 1; Prairie Dog Creek, 648; *Pultusk, 1082; *Queens Mercy, 336; *Quenggouk, 992; *Rancho de la Presa, 36; Ransom, 86; *Richardton, 8422; *Rochester, 1; *Rose City, 4691; Rowena, 110; St. Ann, 8; Saline, 39; *Salles, 14; San Carlos, 7; San Emigdio, 10; Scott City, 140; *Searsmont, 46; Selma, 130,

751; *Sena, 45; *Seres, 11; *Sete Lagõas, 4; *Sitathali, 36; *Stålldalen, 444; Stonington, 1; *Tabor, 42; *Takenouchi, 9; Texline, 657; *Timochin, 24; *Tjabe, 1; *Tomatlan, 72; Tomhannock Creek, 1174; *Toulouse, 14; Travis County, 10; *Trenzano, 377; *Tromøy, 9; Tulia, 44; *Tysnes Island, 156; *Uberaba, 84; *Udipi, 14; *Utzenstorf, 2; Uvalde, 5; *Vernon County, 2; *Visuni, 3; Wairarapa Valley, 7; Wellman, 3; *Wessely, 7; *Weston, 258; Willowdale, 207; Woodward County, 182; Wray, 1; *Yatoor, 66; *Yonozu, 140; *Zebrak, 149; *Zsady, 5.

OLIVINE-HYPERSTHENE CHONDRITES

Abernathy, 2; Accalana, 1; *Achiras, 49; Adelle Land, 3; *Aguada, 86; *Akaba, 1; Akron No. 3, 42; *Aldsworth, 1; *Aleppo, 147; *Alfianello, 1370; *Andover, 1; *Angers, 20; *Appley Bridge, 215; *Apt, 1; Arcadia, 68; Arriba, 160; Artra-coona, 6; *Asco, 2; Assam, 1; *Atemajac, 1; *Aumale, 60; *Aumieres, 45; *Ausson, 437; *Bachmut, 25; *Bandong, 28; Barratta, 2108; *Bath Furnace, 50; Beenham, 74; Belle Plaine, 23; *Benares, 8; *Benton, 127; *Berlanguillas, 2; *Bjurböle, 798; Bluff, 15,960; Boelus, 1; *Borgo San Donnino, 1; *Bori, 340; *Borkut, 35; Bowesmont, 97; *Bremervörde, 204; Briscoe, 57; *Bruderheim, 401; *Buschhof, 178; *Cabeza de Mayo, 7; Cadell, 2; Calliham, 83; Carraweena, 483; Cartoonkana, 2; *Castine, 1; *Chandakapur, 18; *Chantonay, 161; *Chateau-Renard, 56; *Cherokee Springs, 1; Chico, 2; Cocunda, 1; *Colby, 823; Concho, 759; *Cynthiana, 407; Dale Dry Lake, 1; Dalgety Downs, 21,284; *Dandapur, 254; *Danville, 5; Davy, 1; *Deal, 1; DeNova, 1; Densmore, 103; *Dhurmsala, 548; *Drake Creek, 23; *Durala, 36; Duruma, 1; Ellerslie, 1; *Ensisheim, 127; *Ergheo, 178; *Farmington, 6284; Finney, 114; *Fisher, 1768; *Forsyth, 89; *Futtehpur, 4; *Gambat, 44; Garraf, 70; *Gifu, 2; *Girgenti, 94; Goodland, 61; Grant County, 1; *Grossliebenthal, 54; *Hallingeberg, 173; *Hamlet, 3; *Harleton, 1; *Harrison, 5; Harrisonville, 135; Hayes Center, 82; Hendersonville, 179; Hermitage Plains, 353; Hesston, 43; *High Possil, 1; *Holbrook, 23,860; *Homestead, 9754; Indianola, 1; Ioka, 2; Isoulane, 1; *Jelica, 753; Jerome, 6; *Jhung, 24; Johnson City, 485; *Kamalpur, 1; *Karakol, 2; Kermichel, 54; Keyes, 37; *Khohar, 15; Kingfisher, 80; *Knyahinya, 1171; *Kuleschovka, 13; Kulnine, 471; *Kunashak, 387; *Kyushu, 8854; *La Bécasse, 30; Ladder Creek, 4713; *L'Aigle, 157; Lake Bonney, 40; Lake Brown, 137; Lake Grace, 21; Lake Labyrinth, 767; Laketon, 202; La Lande, 144; *Leedey, 7; *Leonovka, 1; *Le Pres-soir, 14; *Loves, 102; *Linum, 2; *Lissa, 220; *Little Piney, 10; Long Island, 35,711; Loongana, 36; *Lucé, 1; *Lundsgård, 107; *Mabwe-Khoywa, 1; Mainz, 114; Makarewa, 14; *Manbhoom, 483; *Mangwendi, 461; *Marion (Iowa), 223; Marion (Kansas), 32; Marlow, 1; *Marmande, 1; *Mauerkirchen, 83; *Mauritius, 1; *Maziba, 45; McAdoo, 956; McKinney, 5449; Melrose, 599; *Mern, 24; *Mezo-Madaras, 17; *Middlesbrough, 1; *Mike, 3; *Milena, 14; Minas Gerais, 6; *Mocs, 1247; *Modoc, 18,269; *Molina, 8; *Mooresfort, 44; *Moorleah, 2; Muizenberg, 3; *Muraid, 1; Nardoo No. 2, 1; *Narellan, 2; Naretha, 9; Neenach, 58; *Nerft, 252; Ness County, 14,507; New Almelo, 1; *New Concord, 1688; Oberlin, 100; *Oesel, 3; *Ó-Fehértó, 10; *Okniny, 3; *Olivenza, 1747; *Orvinio, 3; *Oterøy, 4; *Ottawa, 275; *Pacula, 292; *Paragould, 3778; *Parnallee, 1540; *Pavlograd, 10; Peck's Spring, 1; *Perpeti, 1; *Pervomaisky, 178; Pinto Mountains, 2; *Pirgunje, 24; *Ploschkovitz, 8; Potter, 4981; *Pricetown, 480; *Rakovka, 337; *Ramnagar, 1; *Rampurhat, 1; *Ramsdorf, 8; *Reliegos, 280; *Renca, 5; *Richmond, 15; *Rich Mountain, 38; Roy,

1435; Rush Creek, 3; Rushville, 22; *St. Caprais-de-Quinsac, 7; *St. Mesmin, 21; *St. Michel, 752; St. Peter, 41; Salla, 19; San Pedro Springs, 49; *Savtschenskoje, 41; *Schellin, 1; *Schönenberg, 50; *Segowlie, 4; *Sevrukovo, 39; Shaw, 24; *Shelburne, 58; *Shikarpur, 1; *Shytal, 25; *Siena, 44; *Ski, 1; *Slobodka, 1; Smith Center, 1; *Soko-Banja, 167; *Stavropol, 48; Sublette, 60; *Tadjera, 35; Taiban, 2; *Tauq, 216; Temple, 64; *Tenham, 986; *Tennasilm, 180; *Tilden, 993; *Tourinnes-la-Grosse, 111; Tryon, 258; *Trysil, 11; Twentynine Palms, 3; Umm Tina, 14; *Utrecht, 3; Valkeala, 9; Valley Wells, 96; *Vavilovka, 25; Vera, 3; Vincent, 2; *Vouillé, 176; Waconda, 119; Wickenburg, 640; *Wold Cottage, 43; *Woolgorong, 700; Yalgoo, 6; Yandama, 206; *Yorktown, 6; *Zaborzika, 2; *Zabrodje, 1; *Zavid, 836; *Zomba, 242.

OLIVINE-PIGEONITE CHONDRITES

*Felix, 1; *Grosnaja, 26; *Kaba, 1; *Karoonda, 1314; *Lancé, 4; *Mokoia, 45; *Ngawi, 1; *Ornans, 10; *Tieschitz, 13; *Vigarano, 319; *Warrenton, 91.

CARBONACEOUS CHONDRITES

*Alais, 1; *Al Rais, 3; *Bells, 5; *Boriskino, 2; *Cold Bokkeveld, 11; *Erakot, 2; *Haripura, 1; *Ivuna, 70; *Mighei, 36; *Murray, 20; *Nogoya, 8; *Orgueil, 62; *Renazzo, 15.

ENSTATITE ACHONDRITES

*Bishopville, 29; *Bustee, 1; *Cumberland Falls, 2923; *Khor Temiki, 111; *Norton County, 249; *Peña Blanca Spring, 4; Shallowater, 2.

HYPERSTHENE ACHONDRITES

*Ibbenbüren, 1; *Johnstown, 22,289; *Shalka, 98; *Tatahouine, 5.

OLIVINE ACHONDRITE

*Chassigny, 4.

OLIVINE-PIGEONITE ACHONDRITES

Goalpara, 10; *Novo-Urei, 12.

PYROXENE-PLAGIOCLASE ACHONDRITES

*Bialystok, 1; *Binda, 31; Cachari, 1; *Chaves, 1; *Constantinople, 1; *Frankfort, 19; *Haraiya, 57; *Juvinas, 321; *Kapoeta, 84; *Lakangaon, 1; *Le Teilleul, 4; *Luotolax, 1; *Nobleborough, 1; *Nuevo Laredo, 5; *Pasamonte, 46; *Pavlovka, 4; *Petersburg, 13; *Serre de Magé, 30; *Sherghotty, 49; *Sioux County, 4; *Stannern, 44; *Zmenj, 7.

DIOPSIDE-OLIVINE ACHONDRITE

*Nakhla, 66.

MESOSIDERITES

Bondoc, 636; Crab Orchard, 1366; *Estherville, 2753; Hainholz, 321; *Lowicz, 396; Mincy, 2032; Morristown, 356; *Patwar, 234; Pinnaroo, 248; *Udei Station, 137; Vaca Muerta, 7912; *Veramin, 123; Winona, 392.

PALLASITES

Admire, 6371; Ahumada, 3405; Australia, 21; Bitburg, 80; Brahin, 76; Brehm, 181,165; Eagle Station, 177; Esquel, 10; Finmarken, 62; Huckitta, 3766; Imilac, 4997; Krasnojarsk, 1151; *Marjalahti, 60; Molong, 420; Mount Dyrning, 614; Mount Vernon, 16; Ollague, 293; Pavlodar, 23; South Bend, 58; Springwater, 493.

LODRANITE

*Lodran, 31.

SIDEROPHYRE

Steinbach, 84.

HEXAHEDRITES

Agricultural College, 126; Auburn, 99; Ballinger, 74; Bingera, 268; *Braunau, 222; Cedartown, 271; Chesterville, 29; Cincinnati, 84; Coahuila, 9544; Forsyth County, 906; Hex River Mountains, 2515; Holland's Store, 213; Hressk, 541; Iredell, 180; Kendall County, 380; La Primitiva, 174; Locust Grove, 325; Mejillones, 311; Murphy, 559; Negrillos, 24; *Okano, 205; Otumpa, 34,816; San Francisco del Mezquital, 36; Sandia Mountains, 57; Scottsville, 533; Sierra Gorda, 315; Siratik, 251; Summit, 33; Tombigbee River, 1008; Walker County, 71; Warialda, 93; Zacatecas, 71.

COARSE OCTAHEDRITES

Ainsworth, 3568; Akpohon, 1473; Alexander County, 61; Angelica, 110; Arispe, 6125; Ashfork, 1470; Bendegó, 726; Billings, 2203; Bischtübe, 402; Black Mountain, 55; Bohumilitz, 249; Burkett, 6662; Canyon Diablo, 592,660; Casey County, 22; Central Missouri, 1055; Cookeville, 294; Coolac, 256; Cosby's Creek, 647; Cranbourne, 1616; Deport, 409; Dexter, 1276; Duel Hill, 1493; El Burro, 315; Gladstone, 16,123; Glasgow, 3672; Goose Lake, 50; Jenny's Creek, 228; Lexington County, 211; Linwood, 1083; Lonaconing, 99; Magura, 1066; Mooranoppin, 175; Mount Ayliff, 207; Mount Joy, 1059; Mount Stirling, 1464; Nelson County, 346; New Baltimore, 430; Odessa, 1377; Oscuro Mountains, 252; Paulding County, 100; Pine River, 7; Pittsburg, 4; Ponca Creek, 27; Queensland, 94; Quinn Canyon, 13; Reed City, 296; Rosario, 1540; St. Francois County, 312; Santa Luzia, 1525; Santa Rosa, 6652; São Julião de Moreira, 2065; Sarepta, 95; Seeläsgen, 258; *Sikhote-Alin, 375; Silver Crown, 136; Smithville, 16,576; Tennant's Iron, 4; Union County, 59; Ute Pass, 54; Waldron Ridge, 372; Weekeroo, 3188; Wichita County, 1719; Yenberrie, 3760; Youndegin, 3227; Zaffra, 1229.

MEDIUM OCTAHEDRITES

Adargas, 74; Arlington, 996; Boxhole, 8730; Burlington, 69; Cachiyuyal, 12; Canton, 36; Canyon City, 803; Cape York, 34½ tons; Carbo, 642; Carthage, 35; Casas Grandes, 820; Charcas, 148; Chilkoot, 26; Chinautla, 95; Chulafinnee, 83; Cleveland, 484; Colfax, 237; Coopertown, 681; Costilla Peak, 5316; Dalgarranga, 42; Dalton, 76; Davis Mountains, 28; Delegate, 130; Denton, 13; Descubridora, 2509; Dungannon, 559; *Elbogen, 47; El Capitan, 6319; Emmitsburg, 31; Fort Pierre, 1827; Franceville, 656; Glorieta Mountain, 29,570; Guilford County, 4; Hammond, 842; Harriman, 121; Hayden Creek, 15; Henbury, 71,886; Hopper, 8; *Hraschina, 80; Iron Creek, 89; Ivanpah, 578; Jackson County, 45; Joe Wright Mountain, 277; Juncal, 165; Kaalijarv, 9; Kenton County, 9590; Kingston, 1001; La Caille, 29; Lénártó, 173; Losttown, 877; Lucky Hill, 15; Luis Lopez, 362; Marshall County, 20; *Mazapil, 93; Merceditas, 11,400; Milly Milly, 230; Misteca, 140; Moctezuma, 177; Morito, 5; Mount Edith, 8750; Murfreesboro, 74; Nagy-Vázsony, 218; Nejed, 1819; Nocoleche, 2007; Norfolk, 21,301; Orange River, 91; Oroville, 282; Owens Valley, 32,630; Plymouth, 3645; Puquios, 1621; Rancho de la Pila, 375; Red River, 248; Roebourne, 2371; Ruff's Mountain, 125; Sacramento Mountains, 4752; Sams Valley, 1985; San Angelo, 933; Santa Apollonia, 379; Schwetz, 21; Seneca Falls, 44; Seneca Township, 190; Shrewsbury, 563; Signal Mountain, 57,853; Staunton, 1143; Tamarugal, 11,200; Thunda, 391; Toluca, 9633; Tonganoxie, 321; Toubil River, 343; Trenton, 761; *Treysa, 214; Verkhne Udinsk, 208; Welland, 261; Willamette, 14 tons; Williamstown, 16,865; Wooster, 4; York, 701.

FINE OCTAHEDRITES

Anoka, 39; Apoala, 80; Augustinovka, 303; Bacubirito, 26; Ballinoo, 3320; Bear Creek, 116; Bella Roca, 2190; Bridgewater, 156; Bristol, 193; Butler, 335; Cambria, 210; Carlton, 4967; *Charlotte, 59; Chupaderos, 119; Cowra, 677; Cranberry Plains, 7; Cruz del Aire, 15,010; Cuernavaca, 292; Duchesne, 245; Duel Hill, 75; Espiritu Santo, 35; Gibeon, 561,773; Grand Rapids, 8375; *Hill City, 115; Huizopa, 3571; Jamestown, 92; Knowles, 161,066; La Grange, 56; Laurens, 40; Madoc, 27; Mantos Blancos, 34; Maria Elena (1935), 327; Mart, 202; Mount Magnet, 52; Mungindi, 7300; Muonionalusta, 124; Narraburra, 41; Obernkirchen, 21; Perryville, 137; Persimmon Creek, 14; *Pitts, 47; Putnam County, 35; Rodeo, 77; Russel Gulch, 5052; St. Genevieve County, 3708; Salt River, 61; Smith's Mountain, 485; *Soroti, 61; Tazewell, 368; Thurlow, 136; Verkhne Dnieprovsk, 77; *Victoria West, 2; Wallapai, 499; Wood's Mountain, 68; Ysleta, 140,517.

NICKEL-RICH ATAXITES

Babb's Mill, 58; Cape of Good Hope, 119; Deep Springs, 733; Guffey, 309,030; Hoba, 474; Illinois Gulch, 269; Iquique, 88; Klondike, 788; Kokomo, 9; Lime Creek, 130; Linville, 60; Monahans, 333; Oktibbeha County, 13; San Cristobal, 853; Santa Catharina, 1490; Shingle Springs, 106; Smithland, 40; Tawallah Valley, 217; Tlacotepec, 2786; Tucson, 510; Washington County, 13.

TEKTITES AND SIMILAR GLASSES

Though the identification of tektites as originating from outer space, and hence meteorites, is still disputed, these enigmatic bodies may well be included in a catalogue of this sort. The tektite collection of this museum is not a large one, but is fairly comprehensive, containing specimens from the major strewnfields except that of the Ivory Coast in West Africa.

		NO. OF SPECIMENS	TOTAL WEIGHT (IN GRAMS)
<i>Moldavites</i>			
T1	Moldautheim, Bohemia	2	86
T13	Nachov, near Trhove, Bohemia	1	8
T14	Near Kremal, Moravia	1	2
T15-20	Nestomitz, near Budweis, Bohemia	6	143
<i>Philippinites</i>			
T10	Pugad Bubay, Bulacan, Luzon	11	247
T30	Ortigas, near Manila, Luzon	4	52
<i>Indochinites</i>			
T4	Tan Hai Island, China	4	55
T5	Lang Bian, Vietnam	3	65
T6	Northern Cambodia	5	62
T24	Tan Hai Island, China	1	11
T25	Wiang Papao, Thailand	5	123
T31	Pailin district, Thailand	34	92
<i>Billitonites</i>			
T2	Billiton Island	2	19
T7	Billiton Island	14	42
<i>Javanites</i>			
T9	Kali Oso, Java	4	141
T22	Kali Oso, Java	2	10
<i>Australites</i>			
T3	Central Australia	6	40
T12	Australia	9	114
T26	Port Campbell, Victoria	9	39
T27	Childer's Cove, Victoria	6	5
T28	Cavendish, Victoria	3	3
T29	Stanhope Bay, Victoria	33	13
T32	Near Finke, Central Australia	5	50
T33	Near Tibooburra, New South Wales	3	15
T34	Lake Yindarlgooda, Western Australia	72	274
T35	Near Lake Torrens, South Australia	97	262
T36	Mulka Station, South Australia	54	329

		NO. OF SPECIMENS	TOTAL WEIGHT (IN GRAMS)
<i>Bediasites</i>			
T21	Grimes Co., Texas	1	14
T23	Texas	2	38
<i>Darwin Glass</i>			
T8	Mt. Darwin, Tasmania	12	8
T37	Mt. Darwin, Tasmania	40	68
<i>Libyan Desert Glass</i>			
T11	Libyan Desert	1	306

REFERENCES

HOVEY, E. O.

1896. Catalogue of meteorites in the collection of the American Museum of Natural History, to July 1, 1896. Bull. Amer. Mus. Nat. Hist., vol. 8, pp. 149-156.

REEDS, C. A.

1937. Catalogue of the meteorites in the American Museum of Natural History. Bull. Amer. Mus. Nat. Hist., vol. 73, pp. 517-672.